



RIDER TEHNIC

LUMINI:

12 x Fresnel 1KW + bard doors
16 x Led Bar Chauvet HEX8
2 x Fresnel Chauvet Ovation Led F 165-WW
2 x Profile Chauvet Ovation E 190-WW + iris
1 x Dimmer 12ch
1 x Consolă de lumini MA OnPC Wing

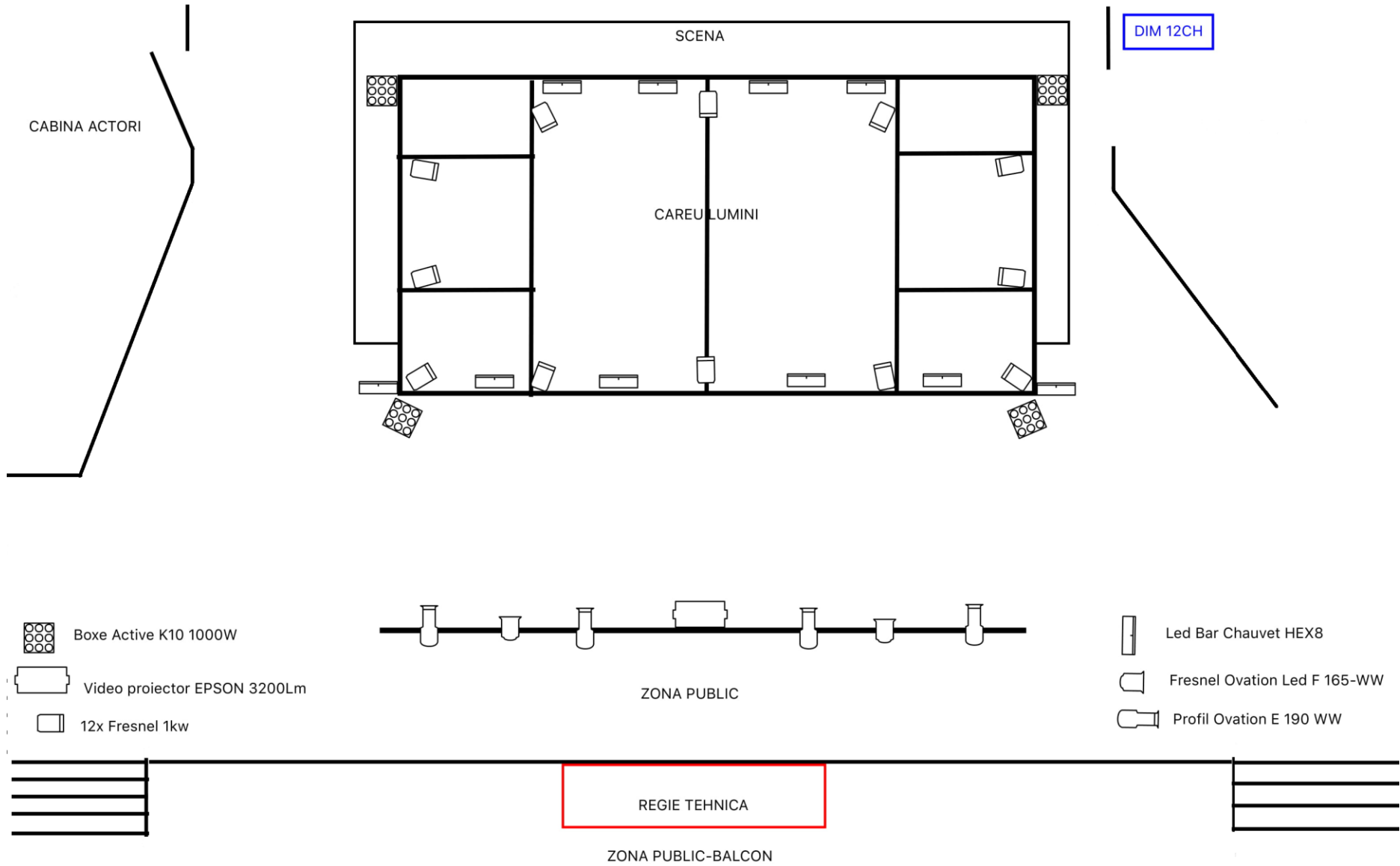
SUNET:

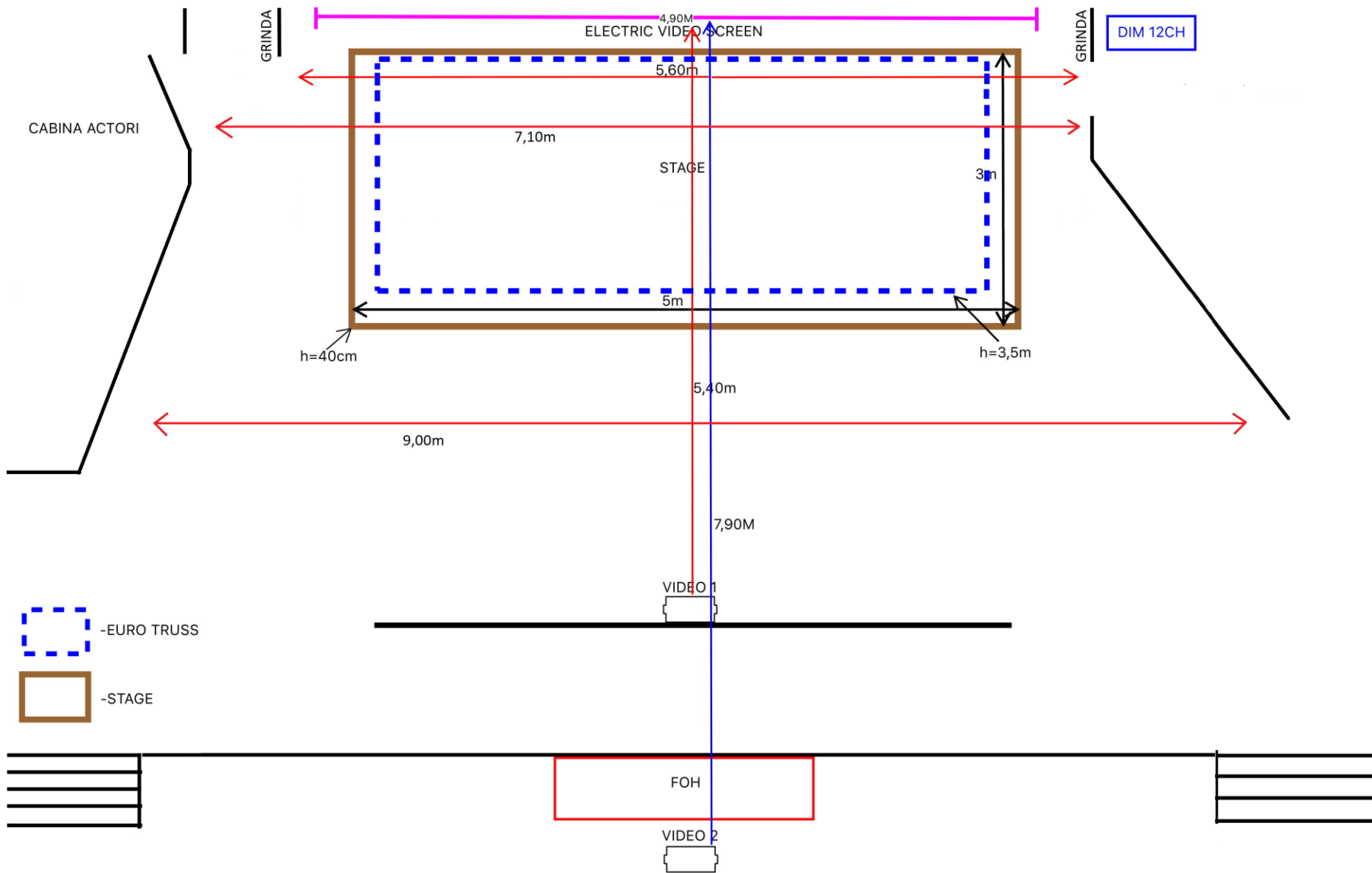
PA = 4 x QSC K10
Monitoare = 2 x QSC K8
2 x SHURE BETA wireless
2 x Stative microfon
1 x Mixer audio Allen & Heath Q16
1 x Placa externa audio FocusRite 2i4



VIDEO:

2 x Video Proiector EPSON EB-X18
1 x Matrox TripleHead2Go Digital Edition
Resolume Arena5

Cabluri & adaptoare





-  -EURO TRUSS
-  -STAGE